

Typical Specification for Painted Casing Isolators/Spacers

Factory made casing spacers of the following description shall be installed on any carrier pipe passing through a pipe casing. Wooden skids are not acceptable as an alternative.

Casing spacers shall be Model A8G-1 for carrier pipes up to 18-inch diameters (A8G-2 for 20" to 24", A12G-1 for 24" to 30") and Model A12G-2 for larger pipe sizes as manufactured by Pipeline Seal and Insulator, Inc., Houston, TX.

Casing spacers shall have a minimum 14 gauge steel band and 10 gauge risers. The band, risers and connecting studs shall be welded, and cleaned at the factory before application of the synthetic enamel coating. The spacer shall have a flexible PVC liner of 0.09" thickness with a durometer "A" 85-90 hardness. The runners shall be at least 7" long (11" for A12 Model) and high pressure molded from glass reinforced polyester with a minimum compressive strength of 18,000 psi.

Polyethylene runners are not an acceptable alternative. The runners shall be attached to the band or riser by 3/8" welded steel studs and lock nuts which shall be recessed in the runner for the 2" wide runners whereas the 1" runners shall be spot welded to the band or riser. The band section shall be bolted together with cadmium plated studs, nuts and washers.

Please Note:

In any application where there may be concern with the carrier pipe floating within the casing as would be the case with a polyethylene sewer line; the casing spacers should be a "restrained" style. If this is the case the following paragraph should be included:

Casing spacers shall have sufficient riser height to limit vertical movement of the carrier pipe in the casing.

Each casing spacer shall be manufactured at a facility that has a Registered ISO 9001:2000 Quality Management System. Copy of current ISO 9001:2000 Registration shall be provided with material submittal.

Considerations

The above specification is considered sufficient for most pipe sizes and types up to 36" and casing lengths up to 300'. For larger size pipes, longer casings or unusual applications please contact Pipeline Seal and Insulator, Inc.

Recommended spacing is approximately 3 per joint of pipe or 1 spacer per every 6-7 feet. Placement of the casing spacer at the insertion mark of a plastic bell & spigot pipe may reduce the tendency for over insertion.

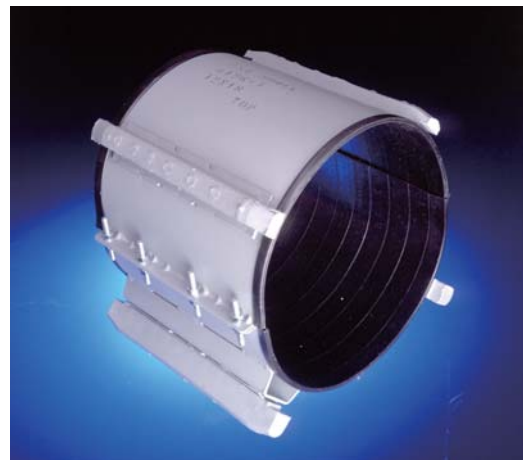
End Seal Specification

After insertion of the carrier pipe in the casing, the ends of the casing shall be closed by installing a PSI Model "C", Model "S" or Model "FW" casing end seal as manufactured by Pipeline Seal and Insulator, Inc., Houston, TX.

Link-Seal® End Seal Specification

(Carrier Pipe Must Centered Within Casing)

After insertion of the carrier pipe in the casing, the ends of the casing shall be closed by installing the Link-Seal® end seals and a 1/8" thick synthetic rubber end seal equal to the PSI Model "C" end seal. Both as manufactured by Pipeline Seal and Insulator, Inc., Houston, TX.



Pipeline Seal and Insulator, Inc.

6525 Goforth Street, Houston, TX 77021 U.S.A.

Tel: 713-747-6948 • Fax: 713-747-6029

Toll Free: 800-423-2410

www.pipelineseal.com • info@psipsi.com