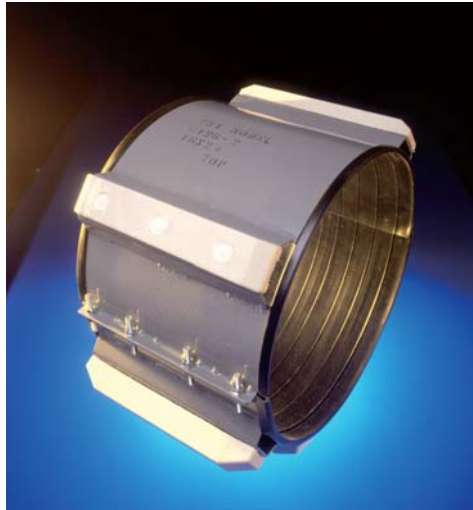


Model "C" Coated Casing Spacer/Isolator Specification

Factory made casing isolators/spacers of the following description shall be installed on any carrier pipe passing through a pipe casing. They are designed to protect the carrier pipe corrosion coating and electrically isolate the carrier pipe from the casing.

Casing Isolators/spacers shall be PSI Model C8G-2 for carrier pipes up to 24-inch diameters and Model C12G-2 for larger pipe sizes as manufactured by Pipeline Seal and Insulator, Inc., Houston, TX. Casing isolators/spacers shall have a minimum 14 gauge steel band and where required, 10 gauge risers. The band, risers and connecting studs shall be welded and cleaned at the factory before the application of a fluidized bed fusion bonded PVC coating of between 10-16 mils thickness. The PVC coating shall provide good resistance to acids and alkalis and excellent resistance under ASTM B117 salt spray tests. (Epoxy coatings are not an acceptable alternative).

The isolators/spacers shall have a flexible PVC inner liner of 0.09 inch thickness with a durometer "A" 85-90 hardness and a minimum 58,000 volt dielectric strength. The runners shall be high pressure molded glass reinforced polymer with a minimum compressive strength of 18,000 psi per ASTM D638. The runners shall be 2.0 inch in width and a minimum of 7.0 inches long for C8G-2 models and 11" for C12G-2 models (polyethylene runners are not an acceptable alternative). The runners shall be attached to the band or riser by 3/8" welded steel studs and lock nuts which shall be recessed far below the wearing surface on the runner. The recess shall be filled with a corrosion inhibiting filler. The band section shall be bolted together with cadmium plated studs, nuts and washers.



Quality Assurance

Each isolator/spacer shall be manufactured at a facility that has a Registered ISO 9001:2000 Quality Management System. Copy of current ISO 9001:2000 registration shall be provided with material submittal.

Considerations

The above specification is considered sufficient for most pipe sizes and types up to 36-inches and casing lengths up to 300 feet. For larger size pipes or longer or unusual casings, please contact Pipeline Seal and Insulator, Inc.

End Seal Specification

After insertion of the carrier pipe in the casing, the ends of the casing shall be closed by installing a PSI Model "C", Model "S", Model "W" or Model "FR" casing end seal as manufactured by Pipeline Seal and Insulator, Inc., Houston, TX.

Link-Seal® End Seal Specification

(Carrier Pipe Must Centered Within Casing)

After insertion of the carrier pipe in the casing, the ends of the casing shall be closed by installing the Link-Seal® end seals and a 1/8" thick synthetic rubber end seal equal to the PSI Model "C" end seal. Both as manufactured by Pipeline Seal and Insulator, Inc., Houston, TX.

Disclaimer

The foregoing performance data is intended as guideline material only and is based on assumptions of general and reasonable use. Performance suitability for any specific application should be determined by the user.



Pipeline Seal and Insulator, Inc.

6525 Goforth Street, Houston, TX 77021 U.S.A.

Tel: 713-747-6948 • Fax: 713-747-6029

Toll Free: 800-423-2410

www.pipeline-seal.com • info@psipsi.com