



Model PE Sizes and Runner Height Information

(For More Runner Height Options, Use Ranger II® Non-Metallic Casing Spacers)

Model PE - 2 Piece Casing Isolator/Spacer

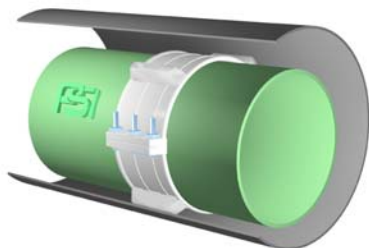
Size (Nominal ANSI)		Specification Data		Approximate Shipping Data		
Carrier	Minimum Casing	Effective Skid Height	No. of Segments Per Unit	No. of Units Per Case	Per Unit Weights in Lbs.	Per Case Cu. Ft.
3/4"	2"	5/16"	2	10	0.05	0.09
1"	3"	1/2"	2	10	0.15	0.13
1-1/4"	3"	1/2"	2	10	0.20	0.14
1-1/2"	3"	1/2"	2	10	0.20	0.18
2"	4"	5/8"	2	10	0.50	0.34
2-1/2"	5"	5/8"	2	10	0.57	0.51
3"	6"	5/8"	2	10	0.65	0.47
4"	6"	9/16"	2	10	0.77	0.34
4"	8"	1"	2	10	1.00	0.47
6"	8"	9/16"	2	10	1.10	0.74
6"	10"	1"	2	10	1.65	0.91
6" (S)	10"	9/16"	2	10	1.92	0.91
8"	10"	9/16"	2	10	1.45	0.56
8"	12"	1"	2	10	2.20	1.13
8" (S)	12"	7/8"	2	10	2.29	1.13
10"	14"	7/8"	2	10	2.37	1.35
10" (S)	16"	7/8"	2	10	2.55	1.35
12"	16"	7/8"	2	10	2.72	1.67

How To Order:

1. Quantity
2. Model Number = (PE)
3. Carrier Pipe O.D. (Type and coating thickness if applicable.)
4. Casing Pipe I.D. (Type and coating thickness if applicable.)
5. Casing O.D.
6. Contact your local distributor or Pipeline Seal & Insulator, Inc.

(S) = Somastic Coated Pipe

General Use: PE Spacers are generally used as casing isolators for the Energy Market. For carrier pipes that do not need to be Centered and Restrained or Clear a Bell. For Water Market Applications, please use Ranger II Casing Spacers or Metallic Casing Spacers for Centered and Restrained Applications and to Clear Bell.



Model PE Casing Isolators are designed primarily for smaller diameter steel or polyethylene carrier pipes (ANSI O.D. pipe without a bell or mechanical joint). We do not recommend that they be used on any carrier pipe over 24" in diameter or for installations over 300 feet long without consulting with PSI. PE Isolators should not be used on concrete carrier pipe.

Model PE Specs on-line www.pipeline-seal.com

Position with-in Casing: PE Standard Position or Centered Position

S = Standard

C = Centered (Min 1" Typical Clearance)



Model PE Sizes and Runner Height Information

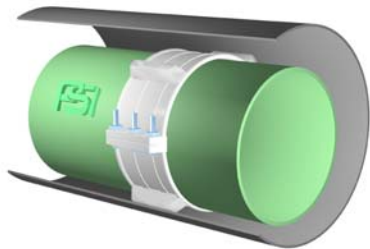
(For More Runner Height Options, Use Ranger II® Non-Metallic Casing Spacers)

Model PE – Multi Segmented Casing Isolator/Spacer For 4" Carrier/Casing Differentials

Size (Nominal ANSI)		Specification Data			Approximate Shipping Data		
Carrier	Minimum Casing	Effective Skid Height	No. of Segments Per Unit		No. of Units Per Case	Per Unit Weights in Lbs.	Per Case Cu. Ft.
			Full LS4	Half LS2			
12" (S)	18"	1"	3	1	10	4.50	2.64
14"	18"	1"	3	1	10	4.50	2.64
16"	20"	1"	4		10	5.00	2.98
18"	22"	1"	4	1	10	5.75	3.31
20"	24"	1"	5		10	6.25	3.65
22"	26"	1"	5	1	10	7.00	3.95
24"	28"	1"	6		10	7.50	4.33
26"	30"	1"	6	1	10	8.25	4.67
28"	32"	1"	7		10	8.75	5.01
30"	34"	1"	7	1	10	9.50	5.34
32"	36"	1"	8		10	10.00	5.63
34"	38"	1"	8	1	10	10.75	5.97
36"	40"	1"	9		10	11.25	6.30
38"	42"	1"	9	1	10	12.00	6.64
40"	44"	1"	10		10	12.50	6.98
42"	46"	1"	10	1	10	13.25	7.32
44"	48"	1"	11		10	13.75	7.66
46"	50"	1"	11	1	10	14.50	7.99
48"	52"	1"	12		10	15.00	8.33

(S) = Somastic Coated Pipe

General Use: PE Spacers are generally used as casing isolators for the Energy Market. For carrier pipes that do not need to be Centered and Restrained or Clear a Bell. For Water Market Applications, please use Ranger II Casing Spacers or Metallic Casing Spacers for Centered and Restrained Applications and to Clear Bell.



Model PE Casing Isolators are designed primarily for smaller diameter steel or polyethylene carrier pipes (ANSI O.D. pipe without a bell or mechanical joint). We do not recommend that they be used on any carrier pipe over 24" in diameter or for installations over 300 feet long without consulting with PSI. PE Isolators should not be used on concrete carrier pipe.

Model PE Specs on-line www.pipeline-seal.com

Position with-in Casing: PE Standard Position or Centered Position

S = Standard C = Centered (Min 1" Typical Clearance)



Model PE Sizes and Runner Height Information

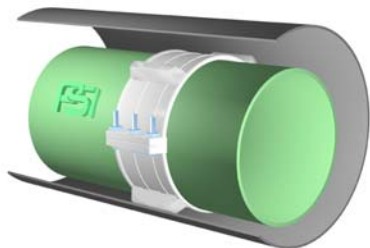
(For More Runner Height Options, Use Ranger II® Non-Metallic Casing Spacers)

Model PE – Multi Segmented Casing Isolator/Spacer For 6" Carrier/Casing Differentials

Size (Nominal ANSI)		Specification Data			Approximate Shipping Data		
Carrier	Minimum Casing	Effective Skid Height	No. of Segments Per Unit		No. of Units Per Case	Per Unit Weights in Lbs.	Per Case Cu. Ft.
			Full HS6	Half HS6A			
14"	20"	1.5"	3	1	10	4.50	2.64
16"	22"	1.5"	4		10	5.00	2.98
18"	24"	1.5"	4	1	10	5.75	3.31
20"	26"	1.5"	5		10	6.25	3.65
22"	28"	1.5"	5	1	10	7.00	3.95
24"	30"	1.5"	6		10	7.50	4.33
26"	32"	1.5"	6	1	10	8.25	4.67
28"	34"	1.5"	7		10	8.75	5.01
30"	36"	1.5"	7	1	10	9.50	5.34
32"	38"	1.5"	8		10	10.00	5.63
34"	40"	1.5"	8	1	10	10.75	5.97
36"	42"	1.5"	9		10	11.25	6.30
38"	44"	1.5"	9	1	10	12.00	6.64
40"	46"	1.5"	10		10	12.50	6.98
42"	48"	1.5"	10	1	10	13.25	7.32
44"	50"	1.5"	11		10	13.75	7.66
46"	52"	1.5"	11	1	10	14.50	7.99
48"	54"	1.5"	12		10	15.00	8.33

(S) = Somastic Coated Pipe

General Use: PE Spacers are generally used as casing isolators for the Energy Market. For carrier pipes that do not need to be Centered and Restrained or Clear a Bell. For Water Market Applications, please use Ranger II Casing Spacers or Metallic Casing Spacers for Centered and Restrained Applications and to Clear Bell.



Model PE Casing Isolators are designed primarily for smaller diameter steel or polyethylene carrier pipes (ANSI O.D. pipe without a bell or mechanical joint). We do not recommend that they be used on any carrier pipe over 24" in diameter or for installations over 300 feet long without consulting with PSI. PE Isolators should not be used on concrete carrier pipe.

Model PE Specs on-line www.pipeline Seal.com

Position with-in Casing: PE Standard Position or Centered Position

S = Standard

C = Centered (Min 1" Typical Clearance)